

RESORT BOARDING

We recognize that staying away from home can be a strain on pets and family. We believe in making your pet feel "at home" by providing tender loving care.



At Companion Animal Hospital dogs and cats are boarded in comfortable compartments and runs. An indoor environment ensures the highest standards of cleanliness and temperature control. Play periods and special exercise packages are available for both dogs and cats. We will be happy to give any medications or special diets that are necessary. Your pet will be constantly monitored during its stay to make sure it is healthy and happy.

- veterinary supervised dog and cat lodging
- clean, comfortable and roomy pet suites
- the latest in sanitation, air, water and cleaning
- outdoor fun romp and play area
- veterinary & grooming services available during stay
- proper nutrition - critical for good health

DOGGY DAY CARE

Plenty of supervised outdoor play (weather permitting), in which your dog will learn to interact with his/her playmates. We also have an outdoor pool, balls, Kongs, and pull toys available for your dog to play with. For the ball players, our professional ball throwers regularly keep the balls in motion. We also have professionally trained dog petters, who are ready and willing to pet and cuddle any dog that desires that service. Throughout the day, your dog will be taught manners and basic obedience commands that will help your dog become a well-rounded pet. After an exciting morning, your dog will have some lunch and some well-deserved rest time- then they are energized and ready to face the rest of the afternoon!



Welcome



Best Friends



Companion Animal Hospital

10555 W. Maple St.
Wichita, KS 67209

ph. (316) 722-1921

www.companionanimalhospitalwichita.com

"Treating Pets Like Family"

OUR PHILOSOPHY

Welcome to Companion Animal Hospital. For over 10 years, we've been taking care of pets and their people in our local community. As a respected veterinary hospital, everything we do – from the careful design of our hospital to the selection of our staff – is done to ensure the comfort and well-being of our patients and their owners. It is our goal to educate and involve clients in developing individualized preventive health care plans that are best for their special companions. Keeping your pet healthy and happy is important. From routine to advanced care, Companion Animal Hospital is proud to offer the very best in veterinary medicine.



OUR STAFF

Our professional staff is compassionate, knowledgeable and utilizes the latest technological advances to provide exceptional medical care. Our veterinarians and licensed veterinary technicians continue to supplement their education, and together with other staff members we offer a wealth of knowledge and experience in the care of your pets. If your primary doctor is unavailable, another highly qualified doctor will monitor the case, using your pet's detailed medical record to continue care. All of our staff cares deeply about our patients.



INDIVIDUALIZED HEALTH CARE PLANS

After completing a yearly Comprehensive Physical Examination, your veterinarian will evaluate your pet's age, breed and lifestyle to determine the risk of potential disease. After discussing your pet's needs, we will design a preventive health care and vaccination plan that is best for your pet.

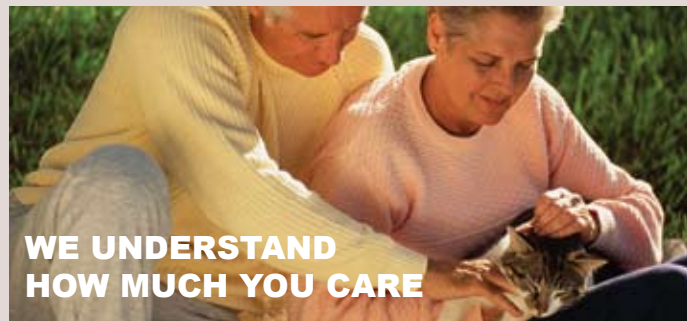


OUR SERVICES

- Pet Behavioral Counseling
- Critical Care
- Internal Medicine
- Nutritional Counseling
- Pet Vacation Boarding
- Advanced Dental Care
- Lifestyle Vaccination Program
- **Individualized Health Care Plans**
- Flea & Parasite Prevention
- General Surgery
- Orthopedic Surgery
- Radiology
- Microchip ID
- Ophthalmology
- Geriatric Medicine
- Grooming
- Allergy Testing
- Pain Management
- Clinical Pathology

ADVANCED PARASITE CONTROL

Parasitic Zoonoses are diseases of animals that can be transmitted to people. The growing popularity of cats and dogs and the high rate of worm infections can result in widespread soil contamination from infected eggs and larvae. At **Companion Animal Hospital** we offer advanced parasite control to help keep your pet and your family safe.



PROGRESSIVE DENTAL CARE

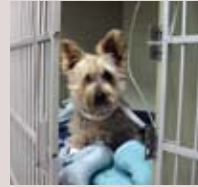
The number one health problem diagnosed in 8 out of 10 cats and dogs over 4 years of age is periodontal disease. Dental diseases put stress on your pet's immune system and weaken the liver, kidney and heart. We provide an extensive dental care program. Our clients have become aware of the importance of having their pet's teeth examined and cleaned on a regular basis. Preventive dental care can add years to the life of your pet.



Periodontal disease with thick tartar formation AND painful gums

YOUR HOSPITALIZED PET

We know your pet will feel more at ease with you at home, but sometimes sick patients need services that can only be performed in the hospital. We strive to keep the length of hospital stays as brief as possible.



While in the hospital your pet will rest comfortably on soft linens in our quiet hospital ward. A licensed veterinary technician is assigned to monitor the condition of each patient and to provide attentive medical treatment with tender loving care. Your pet's doctor will consult often with you to inform you of your pet's progress and to discuss treatment options. Additionally, our licensed veterinary technicians are available to answer any questions or concerns.

EMERGENCY SERVICES

Please call us at once for any emergency. Care is always available for your pet. Our emergency number is our office number (316) 722-1921. Emergencies during hospital hours are given priority over routine procedures. **In most cases, after-hours emergencies will be referred to The Veterinary Emergency and Specialty Hospital of Wichita, 737 S. Washington. Ph. (316) 262-5321.**

HOURS & LOCATION

Doctors hours by appointment only.
Mon., Tues., Wed., Fri., ~ 7:30am - 6pm
Thursday ~ 7:00am - 7:00pm
Saturday ~ 9:00 am - 12 Noon



STATE OF THE ART

Companion Animal Hospital is equipped with state-of-the-art equipment to provide the best care for your pet.



Extensive In-House Laboratory –

Our in-house laboratory gives us point-of-care diagnostic abilities when we're treating sick or injured pets, and allows us to properly evaluate every surgical case prior to anesthesia.

Advanced Anesthesia & Anesthetic Monitoring –

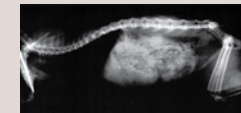
Our monitoring allows us to closely watch heart rate, temperature, respiration rate and oxygen saturation. Our anesthetic drugs are the best provided to ensure the highest level of safety for your pet during the anesthetic procedure.

Advanced Pain Management –

We take pain relief very seriously. We employ preventative pain management strategies using local anesthetics, narcotics and anti-inflammatory drugs. Medications are dispensed for all surgical procedures, wounds, dental extractions and senior arthritis management.

Advanced Radiology –

Our high frequency x-ray machine produces the highest quality radiographs, allowing our doctors to see fine detail and subtle changes.



Blood Pressure Measurement –

Our Doppler blood pressure monitor provides the most accurate blood pressure measurement available. This allows us to screen for high blood pressure early – before it causes irreversible kidney or heart damage or even blindness.

Video Otoscopy & Endoscopy –

Our video otoscopy and endoscopy equipment allows us to look inside body cavities to search for disease. This equipment allows for minimal invasive procedures resulting in quicker recoveries and better diagnostics.

PROFESSIONAL GROOMING SALON

Our staff of professional groomers will brush, comb and trim your pet in a style that is appropriate for its breed and your lifestyle. Groomers will consult with you to determine a style that looks great, is comfortable for your dog and can easily be maintained at home. We have special shampoos and rinses available for dogs with allergies or special skin conditions.



STATE OF THE ART

STATE OF THE HEART



OBEDIENCE TRAINING

At **Companion Animal Hospital** we believe that temperament and good behavior are an important part of your pets health. We offer a multitude of behavioral services:



Obedience Classes- these classes meet one night per week for 6 weeks. One class is for puppies and a separate class is for dogs older than 6 months. They are taught by an experienced, reputable instructor Jackie Storrer. Private instruction/ obedience counseling- these are individually scheduled private consultations with our Obedience Specialist Susan Williams.

WEBSITE – SPECIAL FEATURES

Visit our website www.companionanimalhospitalwichita.com. Here you can get pertinent pet health information on vital services and products. You may also download monthly specials and coupons.